



MULHOUSE ALSACE
AGGLOMÉRATION

**THE GAMES
ARE WON**

HERE

MULHOUSE ALSACE URBAN AREA

**#ADN
SPORT**



Fabian Jordan,
President of the Mulhouse Alsace Urban Area
Mayor of Berrwiller
President of the Association of Mayors of the Haut-Rhin



RECOGNISED KNOW-HOW AND EXPERTISE IN HOSTING SPORTS FEDERATIONS AND SPORTS CLUBS IN THEIR PREPARATION FOR THE 2024 OLYMPIC GAMES

Mulhouse Alsace Urban area is a community in motion, mobilising and encouraging a powerful dynamic in all its municipalities and clubs in the area in anticipation of the 2024 Olympic and Paralympic Games in Paris. This is the reason for the awarding of the "Terre de jeux" label for the whole of the community area, which reflects our desire to involve all players.

Thanks to excellent facilities, favourable to the practice of multiple disciplines, our region is recognised for its dense and diversified network of high quality sports facilities. These facilities, which are spread over 17 sites and cover 35 Olympic and Paralympic disciplines, and the associated services, have enabled us to obtain the label of Preparation Centre for the Olympic and Paralympic Games. This makes us the second centre in France in terms of the number of approved disciplines. This is a real source of pride for our urban area and an undeniable asset in terms of its influence. It is also a powerful indication of our commitment to the development of high-level sport throughout our territory, with a curriculum of excellence to which the youngest have access and which enables them, while continuing their studies, to reach a recognised level of excellence. This comprehensive support scheme is also a significant incentive for many experienced athletes and national and international teams who now choose m2A to come and train and compete in major competitions organised in our facilities.

The Grand INSEP label, awarded to our urban area for its Alsace Regional Sports Centre (ASRC) in September 2021, confirms our know-how by integrating us into a demanding and supportive network. As such, the ASRC serves as a hub, bringing together the various sites representing the high-level dynamics of our territory around its cutting-edge services. Its medical facilities designed to provide physical support for athletes of all levels, its accommodation and catering capacity, its practical exercise and meeting areas, at the heart of a very exclusive environment, are major assets for our region.

Our urban area has also established privileged ties with a number of sports federations, which contribute to further strengthening both our region's sporting dynamism and its experience in hosting events. So, it is with proven know-how and expertise that we will welcome new sports federations or clubs in preparation for the 2024 Olympic and Paralympic Games as well as for intermediate events.

m2A, land of all sports, #Sport DNA

Watch the films



LAND OF ALL SPORTS

#Paris2024	4
Mulhouse Alsace Urban Area awarded the label "Preparation Centre for the Olympic games"	
The Ill sports complex	6
Concentration of premium facilities	
The Alsace Regional Sports Centre, Grand INSEP	8
Complex of excellence, achievement accelerator	
Illberg aquatic complex	14
Water sports stadium Illberg Olympic swimming pool The training and education centre for top-level swimmers	
Gilbert Buttazzoni Sports Centre	16
L'III Stadium	18
Waldeck - Riedisheim athletics track	18
Pulversheim athletics track	18
Mulhouse Climbing Centre	20
Canoe-Kayak and rowing centres	22
Riedisheim rowing centre	24
Niffer rowing centre	25
Gymnasiums and sports centres in the area 2	6
Doller gymnasium Brustlein gymnasium Pfastatt rhythmic gymnastics hall The Cité des Sports multi-sport hall	
Shooting range ball-trap in Cernay	28
Training, recovery, relaxation	30
A selection of sites and facilities for your wellbeing	
m2A map of facilities labelled "Preparation Centre for the Olympic games"	36
A remarkable living environment	38
The culture of Olympism, part of the m2A region's DNA	42
Trusted by partners	44
m2A, at the heart of Europe	46

#PARIS2024, Mulhouse Alsace Urban Area labelled "Preparation Centre for the Olympic games"

The Organising Committee for the Olympic and Paralympic Games (COJOP) has designated the **Mulhouse Alsace Urban Area as a preparation centre for the 2024 Games.**

As Olympic and Paralympic delegations, you need to have access to state-of-the-art and adapted equipment, so that your athletes can train in the best possible conditions. Our region, at the heart of Europe, offers excellent conditions for top-level training. Its strategic geographical location offers direct links to Paris.

As a preparation centre for the Olympic Games, m2A is pleased to welcome you. Make the choice of a territory at the service of sporting excellence!



A TERRITORY FOR TRAINING AND PERFORMING IN 35 DISCIPLINES

17 INSTALLATIONS SERVING SPORTING EXCELLENCE

- **Alsace Regional Sports Centre, labelled Grand INSEP - Mulhouse**
- Rowing centre - Rowing Club Mulhouse
- Rowing centre - Niffer
- Canoe-kayak base - Riedisheim
- Training centre for top-level swimmers - Mulhouse
- Sports city - Rixheim
- Mulhouse Climbing Centre - Mulhouse
- Doller Sports Complex - Mulhouse
- Brustlein Gymnasium - Mulhouse
- Gilbert Buttazzoni Sports Centre - Mulhouse
- Illberg Olympic pool - Mulhouse
- Athletics track - Pulversheim
- Waldeck athletics track - Riedisheim
- Rhythmic gymnastics hall - Pfstatt
- Ill stadium - Mulhouse
- Water sports stadium - Mulhouse
- Shooting range ball-trap - Cernay

20 OLYMPIC DISCIPLINES

- Athletics
- Rowing
- Basketball
- Boxing
- Canoe-kayak slalom
- Road cycling
- Climbing
- Fencing
- Artistic gymnastics
- Rhythmic gymnastics
- Handball
- Judo
- Wrestling
- Swimming
- Taekwondo
- Table tennis
- Shooting
- Triathlon
- Volleyball
- Water-polo

15 PARALYMPIC DISCIPLINES

- Para-athletics
- Para-rowing
- Para-badminton
- Wheelchair Basketball
- Boccia
- Road cycling
- Wheelchair Fencing
- Goalball
- Paralympic judo
- Paracanoe sprint
- Table tennis
- Swimming
- Para-Taekwondo
- Paratriathlon
- Sitting Volleyball



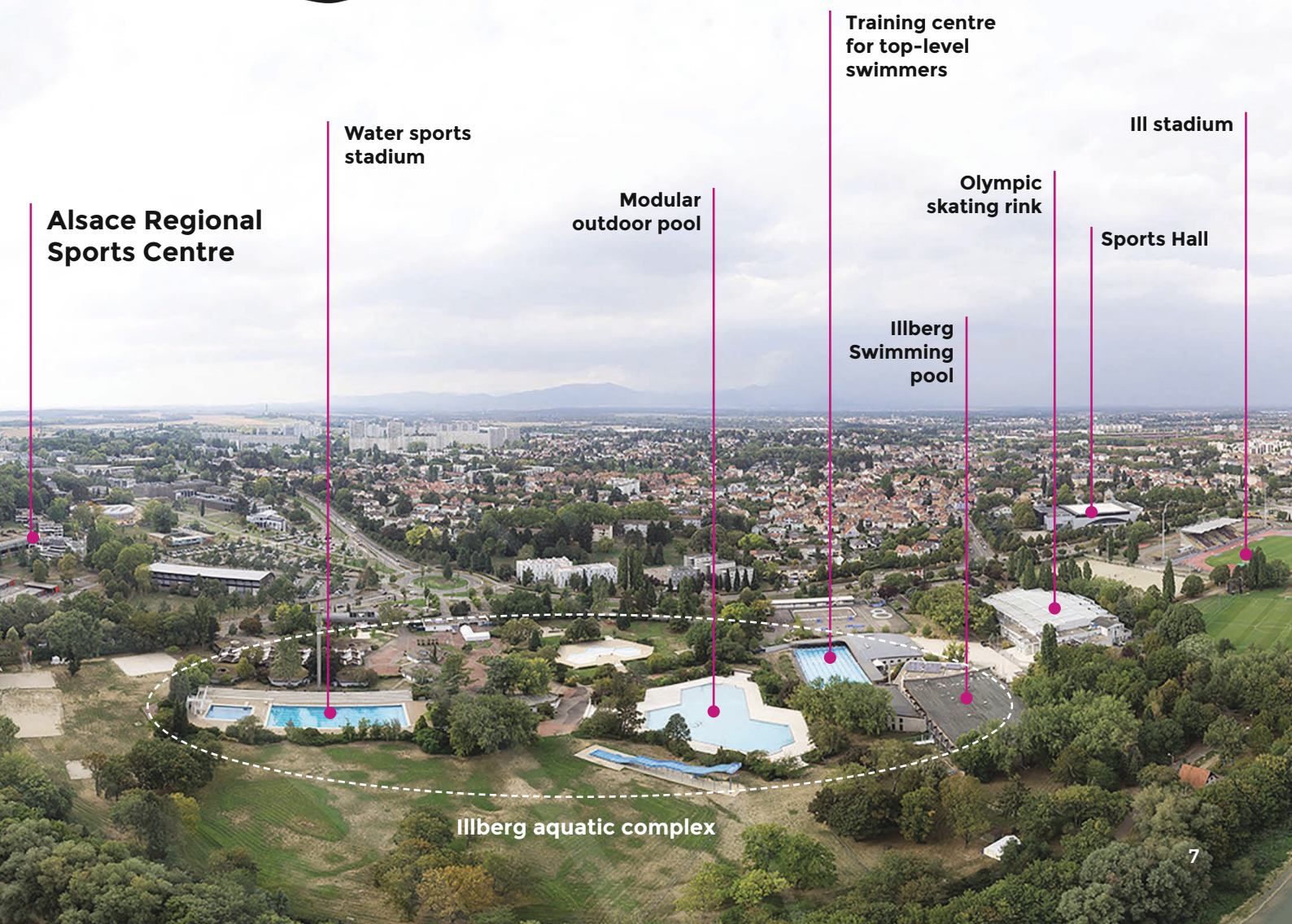
ILL SPORTS COMPLEX

a whole host
of premium sports
facilities



THE ILL SPORTS COMPLEX IS HOME TO

- The Alsace Regional Sports Centre
- The Illberg Swimming pool
- A water sports stadium
- A training centre for top-level swimmers
- Gilbert Buttazzoni Sports Centre
- L'Il Stadium
- The Olympic skating rink

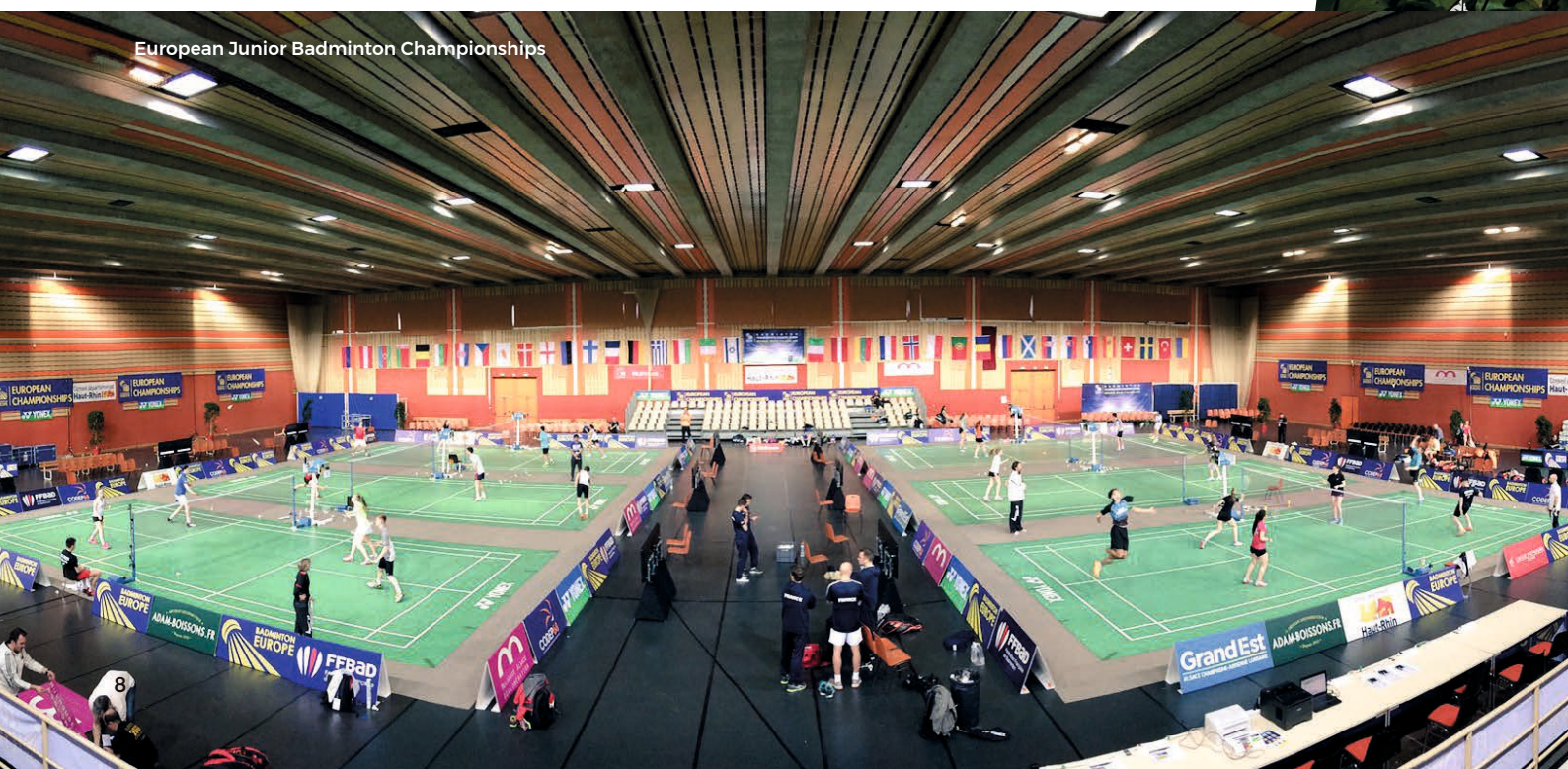


ALSACE REGIONAL SPORTS CENTRE

excellence centre, achievement accelerator



The Alsace Regional Sports Centre (ASRC) labelled "Grand INSEP". The cornerstone of the m2A strategy of sporting excellence, this facility, in the heart of the Ill sports complex brings together all the services required for the training and preparation of top-level athletes.





A 13 000 M² FACILITY IN A 3 HECTARE PARK comprising:



- **1 medical centre, IMSSA** (The Sud Alsace Medical Support Centre)
- **52 rooms with 135 beds**, including 20 rooms adapted to people with reduced mobility
- **9,000 m² of sports areas** (gymnastics, multi-sports area, boxing/wrestling, fencing/archery, body-building)
- **200 places** for meals
- **4 meeting/training rooms**
- **1 auditorium**



Start of Tour Alsace 2021



**Disciplines:**

- Badminton
- Para-badminton
- Basketball
- Wheelchair Basketball
- Boccia
- Boxing
- Road cycling
- Paralympic Road cycling
- Fencing
- Wheelchair fencing
- Goalball
- Artistic gymnastics
- Judo
- Paralympic judo
- Wrestling
- Taekwondo
- Paralympic Taekwondo
- Paralympic table tennis
- Triathlon (road cycling)
- Paratriathlon (para road cycling)
- Volleyball
- Sitting Volleyball

THE ARSC, A ROAD CYCLING CENTRE

Disciplines:

road cycling, para-road cycling, triathlon, para-triathlon

Direct start from the ASRC

The cycling routes from the Alsace Regional Sports Centre (ASRC) are safe and varied. Cycle paths and lightly travelled roads in the plains, hills and mid-range mountains (category 1 and non-category passes), from 140m to 1400m in altitude.

The Tour de France has often included Mulhouse as a stage, most recently in 2019 on the Mulhouse - Plancher des Belles Filles stage, and the Tour Alsace continues to enjoy a wide range of possible routes each year.



THE ARSC, A 280 M² TECHNICAL MEDICAL PLATFORM

The Sud Alsace Medical Support Centre (IMSSA) includes:

- doctors surgeries
- isokinetic laboratory
- full-body cold therapy room (2 rooms at -60°C/ -110°C)
- sauna, cold baths
- functional re-education and physiotherapy unit
- nursing headquarters with reception area
- medical specialties: physical medicine and rehabilitation, sports medicine and biology, rheumatology, neurology, cardiology, radiology, nutritionist, osteopathy.





ILLBERG AQUATIC COMPLEX



- ILLBERG SWIMMING POOL
- WATER SPORTS STADIUM
- TRAINING CENTRE FOR TOP-LEVEL SWIMMERS

**Unique in France:
Three 50m Olympic pools
in the same location**

On a single site, the Illberg aquatic complex offers you all the elements of a successful preparation:

- 1 exterior 50m x 25m pool, heated all year round
- 1 interior 50m x 21m pool
- 1 exterior 50m x 20m pool

+

- 1 exterior 25m x 10m modular pool (in addition)
- Complete high-performance weight training gym
- Recovery areas: jacuzzi, sauna
- Meeting room, video room, nursing station
- Green spaces in a mature park of 4 000 m²

Disciplines:

natation, water-polo, triathlon, swimming para, triathlon para

Distance from the ARSC: 4 min walk



Training centre
50m x 25m modular heated pool (50m or 25m use)



Swimming stadium (50m pool)
National U11 water-polo tournament



Illberg (50m pool)
France - Italy Women's
Water Polo World League



Resident clubs:

Mulhouse Olympic Natation – Mulhouse Water-Polo –
ASPTT Mulhouse Triathlon

Swimmers: Roxana Maracineanu, Yannick Agnel, Amaury Leveaux,
Laure Manaudou, Aurore Mongel, Nicolas Rostoucher, Sébastien Rouault,
Benjamin Stasiulis

Polo players: Camille Radosavljevic, Juliette Dhalluin

Triathletes: Paul Georgenthum, Maxime Hueber Moosbrugger

Training and preparation courses: French swimming
and water polo teams, New Zealand triathlon team

Competitions: French championships, European championships



Tokyo 2021 Olympic Games warm-up match
French Women's Basketball Team (bronze medal winners) / Italy - June 2021



Preparatory training for the Tokyo 2021 Olympic Games
French men's volleyball team (Olympic champions)
May 2021

Disciplines:

volleyball, basketball,
sitting volleyball, wheelchair
basketball, boccia

Distance from the ARSC:

5 min walk

SPORTS HALL

Gilbert buttazzoni



A facility for elite sports!

The local elite clubs regularly use the Sports Centre for their training sessions and matches: ASPTT Mulhouse Volley, Mulhouse Basket Agglomération, Red Star Mulhouse Badminton...

The French men's volleyball team, Olympic champions in Tokyo 2020, have started their preparation before the international competition campaign in Mulhouse in May 2021. The French women's basketball team, silver medalists at Tokyo 2020, have also been to the Palais des Sports in June 2021 for training. The Mulhouse Sports centre is host to various sporting events (basketball, volleyball, futsal, gymnastics, table tennis, badminton, etc.).

Adapted facilities:

- a large hall with seating for 3,700 spectators
- 1 annex room seating 250 spectators
- VIP areas for exclusive reception,
- changing rooms and cloakrooms,
- a weights room,
- meeting rooms and offices





WALDECK ATHLETICS TRACK RIEDISHEIM



A genuine meeting place for athletes, the Waldeck Sports Complex boasts a beautiful athletics track in a tranquil setting amidst forests, with all the equipment necessary for performance.

It is also the starting point for a number of running trails, with Wallach Park and the forest nearby.

Disciplines: athletics, para-athletics, triathlon, para triathlon
Travel time from ARSC: 12 minutes





L'ILL STADIUM



An athletics track with ten straight lanes and eight bends certified for Class 2 World Athletics, high jump and throwing sports areas,

4 training football pitches including one with artificial turf, stands with seating for 11,300 people, a clubhouse with changing rooms, showers, sauna and meeting and leisure rooms.

Disciplines: athletics, triathlon

Distance from the ARSC: 5 min walk



PULVERSHEIM ATHLETICS TRACK



A meeting place for athletes, Pulversheim features a beautiful athletics track, in a peaceful setting surrounded by nature, with all the equipment necessary for athletic preparation and performance.

The area also has a very strong tradition of athletics going back over 100 years, with one of the largest athletics clubs in the area.

Disciplines: athletics, para-athletics, triathlon, para triathlon

Travel time from ARSC: 20 minutes



FRANCE'S HIGHEST CLIMBING WALL

MULHOUSE CLIMBING CENTRE

Disciplines: speed, boulder and lead climbing
Travel time from ARSC: 9 minutes

Rising up to 25-metres, the climbing wall at the Mulhouse Climbing Centre is the highest in France. CMC has over 2,000m² of climbing space and almost 400 m² of boulders.

The climbing facilities focus on the 3 Olympic Games disciplines: speed (international level) and boulder climbing (regional level - upgrading to national level in 2022).

Climbing holds and volumes comply with International Federation specifications.

On-site cherry picker and washing facilities.

CMC has already hosted French Olympic climbing team members (Bassa & Mickaël Mawen) for free practice sessions.





CMC – Speed climbing wall



CMC – Lead climbing wall

CANOE-KAYAK, AND ROWING CENTRES

Disciplines:

canoe-kayak and paracanoe sprint racing

Travel time from ARSC: 11 minutes travel time



RIEDISHEIM CANOE-KAYAK CENTRE

A modern centre for elite sportsmen and women

All facilities meet PRM accessibility standards - National and international sports team training sessions.

Competitions and training camps:

- **National and international**
- **Australian delegation, Swiss, Hungarian and Austrian teams**

Waterway

- **16 kilometres long and 60 m wide** – No flood conditions, low-water levels or currents. Signage every 100, 250 and 500 metres over 2 km - Rhône-Rhine Canal, sheltered by forest from prevailing winds. Can be used all-year-round.

Facilities

- Changing rooms with showers and lockers

Boathouse

- 345 m² of storage space for boats and equipment
- 10 HP motorboat and bikes

130 m² gym

- Bodybuilding equipment, floor exercise and fitness facilities
- Smart rowing machines
- Virtual racing option using software app





Guillaume Keller, World kayak and U23 silver medalist



RIEDISHEIM ROWING CENTRE



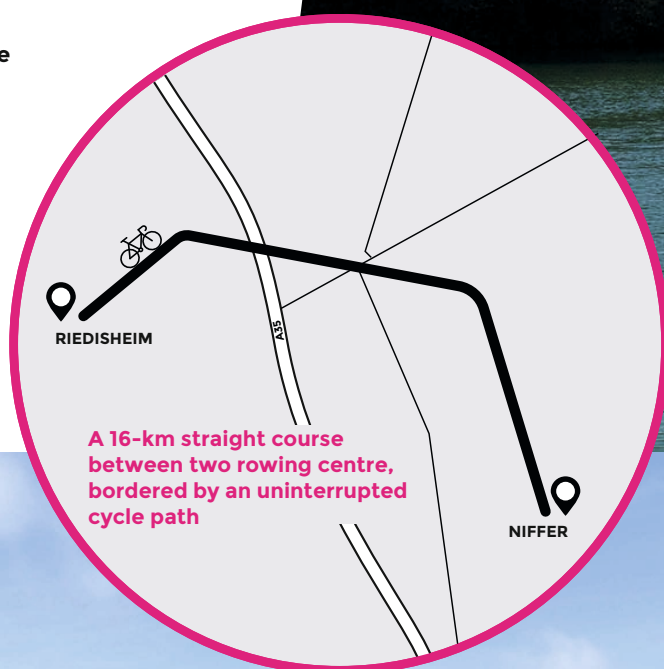
Mulhouse Rowing Club is a member of the French Rowing and Parasports Federation.

The club is based in the city of Mulhouse and benefits from all outlying services. It has a 16 km-long water course for 32 km return runs signposted over 2 km (at 100, 250 and 500 m intervals).

The water course:

Mulhouse Rowing Club is ideally placed on a sheltered water course over 16 km-long, with long straight sections.

Disciplines: rowing and para-rowing
Travel time from ARSC: 11 minutes





NIFFER ROWING CENTRE



This countryside-based rowing centre is ideally located in France, close to Germany and Switzerland. It acts as a base for clubs, leagues and federations, for training camps. The British Rowing Federation uses the centre regularly.

Facilities

- A 400 m² boathouse
- A 150 m² bodybuilding gym with ergometers

Our strengths

- A 16 km water course, ideal for rowing with no current, little other use and sheltered by forest from prevailing winds.
- A tarmac cycle path running alongside the water course providing the option to monitor rowers by bike. Motorboats available.

Discipline: rowing

Travel time from ARSC: 30 minutes



LOCAL GYMNASIUMS AND SPORTS CENTRES



DOLLER GYMNASIUM

A 4,000 m² modern, cutting-edge, modular sports centre opened in 2016

It has a **1,000-seat multisports arena** (44 m x 24 m national standard size)

- **400 m² multisports arena**
- **Bodybuilding gym**
- **300 m² multi-activity hall**
- **10 m climbing wall**
- **Leisure areas and team management rooms**

Discipline: basketball

Travel time from ARSC: 13 minutes

BRUSTLEIN GYMNASIUM

A standard-setting table tennis arena in France's Grand Est region.

An arena specifically designed for table tennis and its club, Mulhouse Table Tennis Club (MTT), one of the best club teams in France.

Disciplines:

table tennis, para-table tennis

Travel time from ARSC: 10 minutes





PFASTATT RHYTHMIC GYMNASTICS ARENA

Pfastatt rhythmic gymnastics arena is the cutting-edge facility you've been looking for!

One of the three competition floors was used for the London 2012 Olympic Games.

Pfastatt has already hosted both Junior and Senior French national teams and the Russian team for training camps, as well as young gymnasts from the Swiss RG academy in Zurich.

Based on FFG rankings, Pfastatt has been one of the 5 best rhythmic gymnastics clubs in France over the last 10 years.

Discipline:

Rhythmic gymnastics

Travel time from ARSC:

16 minutes

THE CITÉ DES SPORTS MULTISPORTS ARENA

A modern and functional sports centre

The facility was built in 2014 and has two large arenas, one for team sports and one for martial arts.

- Seating for 500 spectators
- Team management, and video analysis rooms
- Leisure rooms
- Secure parking

Discipline: basketball

Travel time from ARSC: 16 minutes





SHOOTING RANGE CERNAY CLAY-PIGEON SHOOTING RANGE

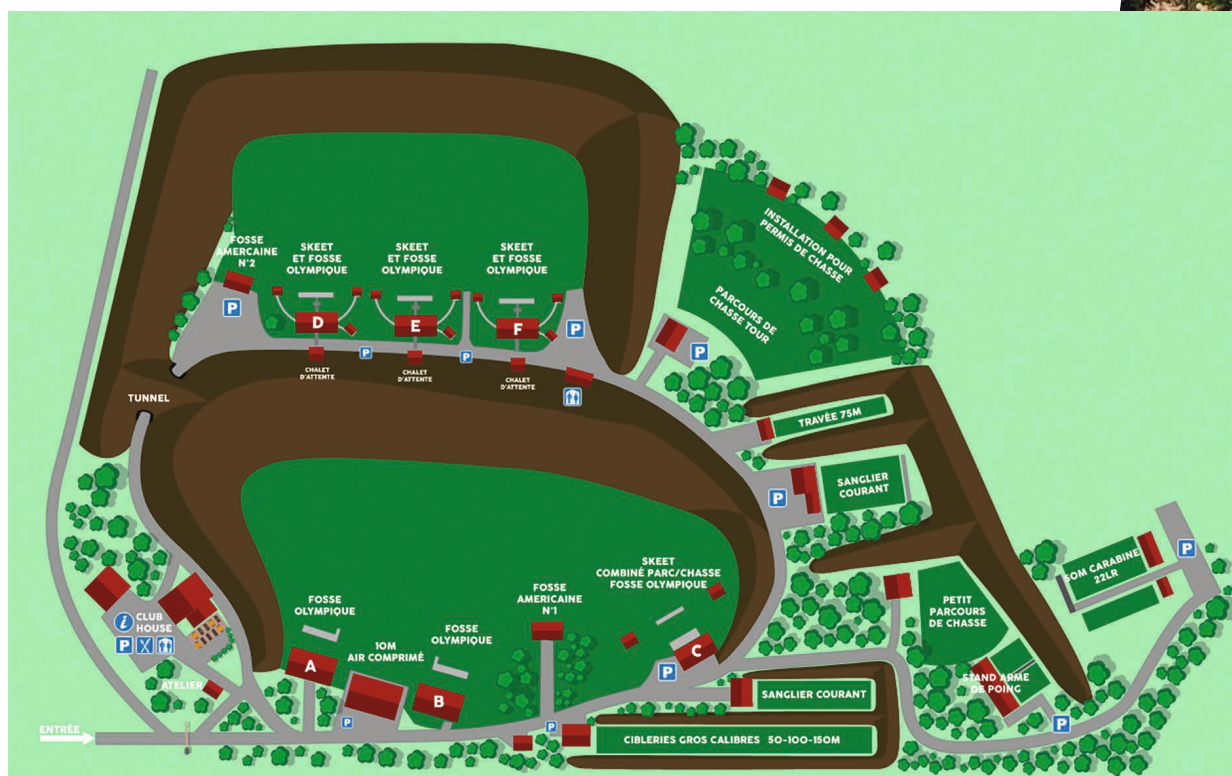


Cernay Clay-Pigeon Shooting Range is a cutting edge venue with a European and worldwide reputation for the quality of its facilities. International championships and elite training camps are held here every year.

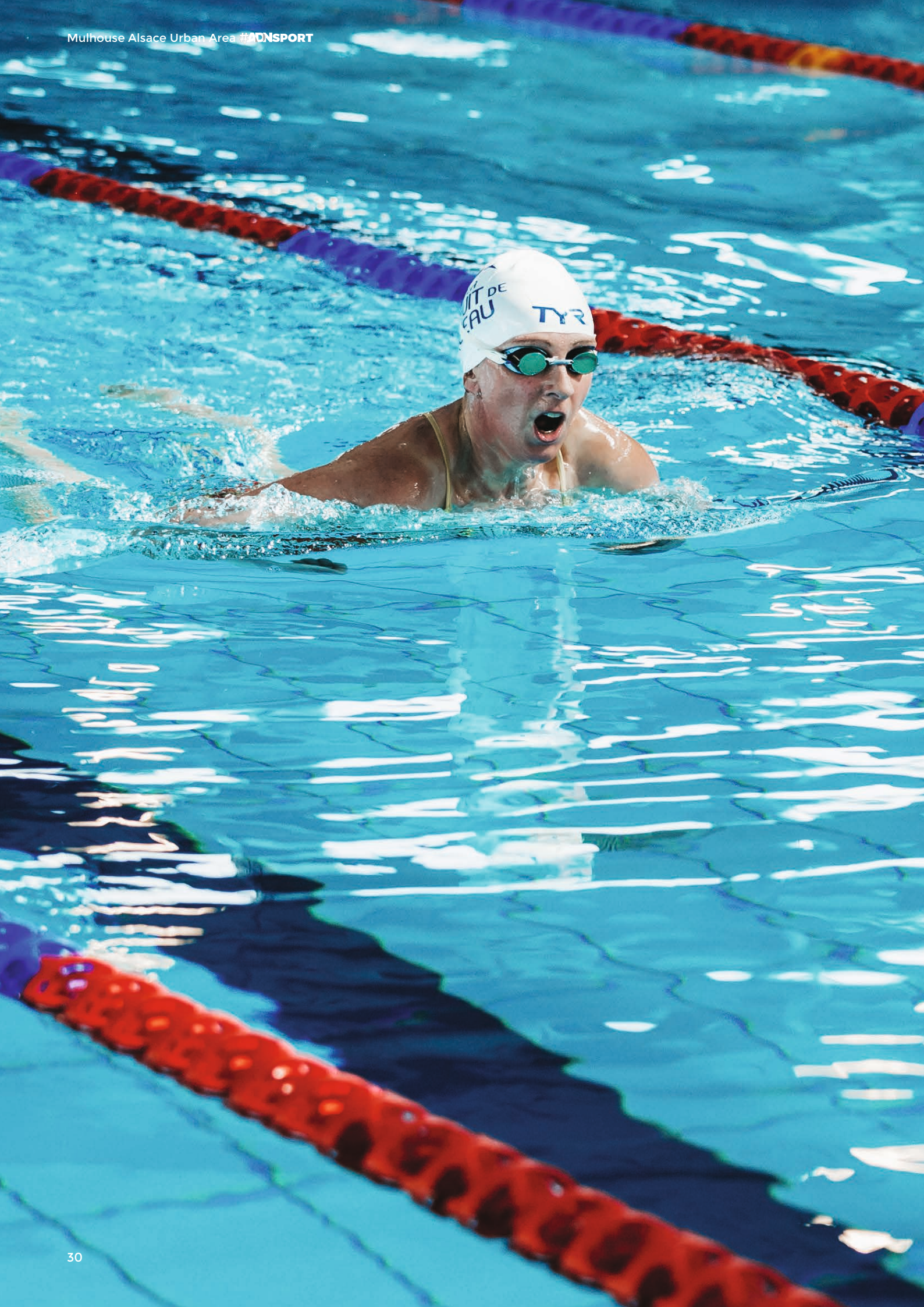
- 6 Olympic trench, universal or double trap ranges
- 4 Olympic skeet ranges
- 5 compak sporting ranges
- 4 sporting ranges

Discipline: shooting

Travel time from ARSC: 17 minutes









TRAINING, RECUPERATION, RELAXATION

**A range of venues and facilities
for your well-being**

REININGUE LAKE WATER SPORTS BASE

A 5 hectare lake surrounded by forest and sheltered from wind to practice open water swimming in ideal conditions.

- Departure pontoon
- Showers - changing rooms
- Leisure and working facilities
- Secure parking

Travel time from ARSC: 11 minutes



AQUARHIN WATER SPORTS CENTRE, AT OTTMARSHEIM

A fitness area for ages 18 and over and including:

- One 27 m² wellness and relaxation suite with recliners
- 2 massage spray showers
- One 9 m² steam room with an LED starscape
- 16 m² sauna

Travel time from ARSC:
20 minutes

ILE NAPOLEÓN WATER SPORTS CENTRE, AT RIXHEIM

A wellness suite:

- 2 saunas (85°C and 90°C)
- Steam room (47°C and 100% humidity)
- plunge pool (approx.16°C)
- outdoor jacuzzi (34°C)
- indoor jacuzzi (36°C)
- cardio-training equipment

Travel time from ARSC:
20 minutes

PIERRE AND MARIE CURIE SWIMMING POOL, MULHOUSE

Inside: One 25 x 10-metre pool and one 18 x 9-metre pool

- aquatic cardio-training equipment (bikes, treadmill, elliptical trainer, etc.)
- Spa: dry and steam saunas,
3 pools at different temperatures, relaxation areas,
all in an outstanding setting. For over-18s.

Travel time from ARSC:
8 minutes



WALDECK SPORTS COMPLEX

A wide range of facilities devoted to outdoor sports

- 1 unrestricted access football pitch
- 1 treetop obstacle course
- 1 outdoor climbing wall
- 1 gymnasium
- 1 athletics track
- 7 grass football pitches
- 1 synthetic football pitch
- 1 archery range
- 5 outdoor tennis courts
- 1 covered tennis court
- 1 skatepark





GOLF

m2A has 3 golf courses in the local area:
Chalampé, Hombourg and Wittelsheim



THE OLYMPIC SKATING RINK

- A 60 x 30 m ice rink
- seating for up to 1,200 spectators
- an ice skating and ice hockey training academy



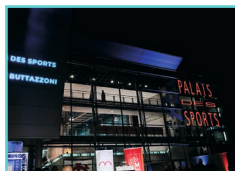
m2A MAP OF CERTIFIED OLYMPIC GAMES-STANDARD TRAINING FACILITIES



III sports complex



1 ALSACE REGIONAL SPORTS CENTRE MULHOUSE
5 rue des Frères Lumière



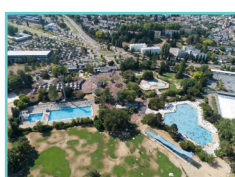
2 GILBERT BUTTAZZONI SPORTS CENTRE MULHOUSE
33 rue de l'Illberg



3 ILL STADIUM MULHOUSE
45 boulevard Charles Stoessel



4 ILLBERG SWIMMING POOL, MULHOUSE,
51 boulevard Charles Stoessel



5 AQUATICS CENTRE
53 boulevard Charles Stoessel



6 ELITE SWIMMING PRACTICE AND TRAINING CENTRE
Boulevard Charles Stoessel



7 PULVERSHEIM ATHLETICS TRACK
3 rue de Mulhouse



8 CERNAY CLAY-PIGEON SHOOTING RANGE
9A rue de l'Industrie



9 PFASTATT RHYTHMIC GYMNASTICS ARENA
30 rue du Collège



10 BRUSTLEIN GYMNASIUM MULHOUSE Rue de Toulon



11 MULHOUSE CLIMBING CENTER
11 rue des Brodeuses



12 DOLLE COMPTOIR
Rue de Thionville



A WONDERFUL SETTING

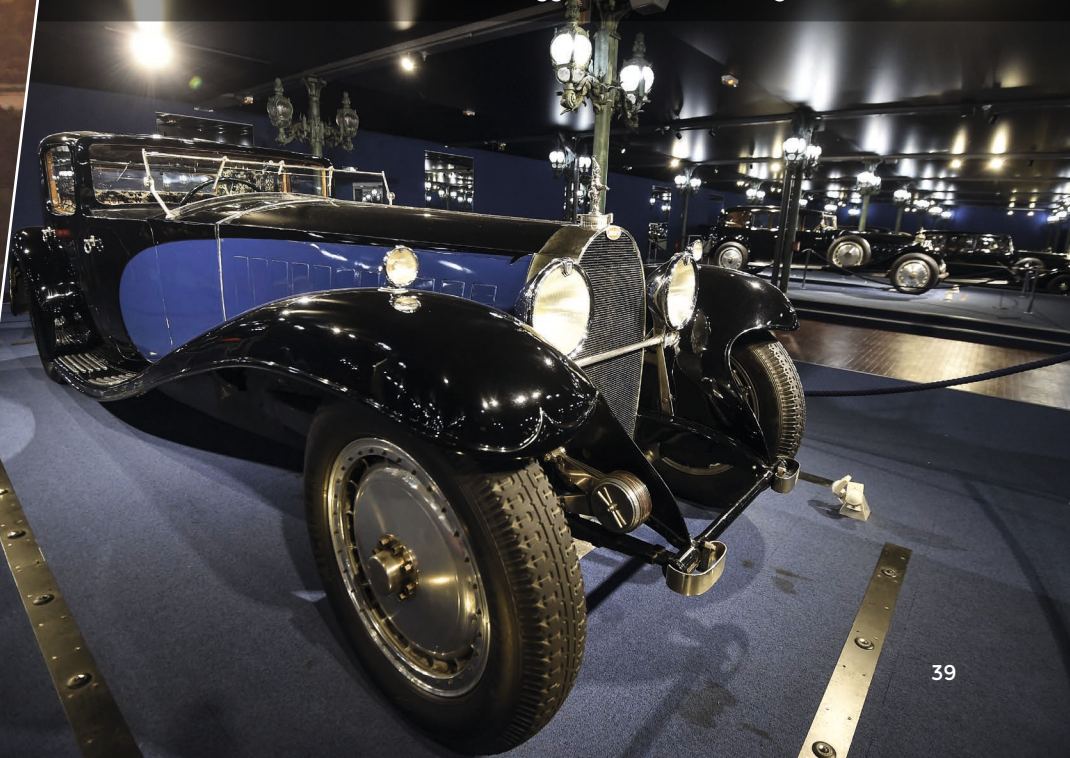


An outstanding zoo and botanical park
N° 1 visitor attraction in the Upper Rhine region

In addition to its wide range of top sports facilities, Mulhouse Alsace Urban Area (m2A) lies in the centre of Europe and offers a unique lifestyle combining culture, gastronomy, nature and heritage.

Further details at mulhouse-alsace.fr

The National Automobile Museum: The biggest collection of Bugatti cars in the world





The Alsace Wine Route



The biggest railway museum in Europe



3 and 4-star hotel accommodation just 5-minutes from the Alsace Regional Sports Centre

Emile Muller Hospital, part of the Mulhouse-Sud Alsace Regional Hospital Group



Cycling country



CONTACT

JOP2024@mulhouse-alsace.fr

Photo credits: m2A, Sébastien Bozon, Michel Foos, Catherine Kohler, Grégory Muller, Serge Nied, Marie Nussbaumer, Mulhouse City and Regional Tourist Board, Sylvain Valentin.

THE CULTURE OF OLYMPISM, PART OF THE m2A REGION'S DNA

As France's second biggest Preparation Centre for the 2024 Olympic Games in terms of the number of disciplines, m2A is already preparing the Olympic and Paralympic Games.

A strong sign of its commitment to the development of elite sport. The countdown has begun!

"AT THE HEART OF OLYMPISM" EXHIBITION

An exhibition to discover, values shared through sport to:

- Support education and cohesion through sport to coincide with the preparation and celebration of the 2024 Paris Olympics.
- Favour the discovery of sport in schools in order to give pupils more access to sport in their daily lives.

Touring exhibition in the "Cité Éducative Mulhouse - Les Côteaux" and in the area's primary schools.



In September 2021, Thom Cicquel - a Tokyo Olympic athlete - visited K. et M. Krafft primary school in Ottmarsheim for the touring exhibition "Journey to the heart of Olympism".

A REGION FLYING THE FLAG FOR OLYMPISM





1000 DAYS UNTIL THE PARIS 2024 OLYMPIC GAMES

The judokas present in the region as part of the "Itinerary of champions / Challenge Schuler" event formed giant Olympic rings on the tatamis.

Collective enthusiasm: the region's sports clubs coming together to celebrate the "1000" days!

m2A organised D-1000 with almost 90 sports clubs invited to organise an activity to showcase their discipline around the number 1000. They were able to post their videos on social media (Facebook, Instagram, Twitter, LinkedIn) with the hashtag #m2Ajo2024.



Information brochures presenting the urban area's proven know-how and expertise in hosting sports federations and clubs in their preparation for the 2024 Paris Olympic Games.



Jo2024.m2A.fr

An "Objective Olympic Games 2024" page linking the region's sports facilities to the different disciplines for which they have "Olympic Games Preparation Centre" accreditation.

mulhouse-alsace.fr

is packed with content dedicated to sporting excellence.



A "Games are won here" brochure Translated into french, german, spanish, portuguese and chinese.

OUR CLIENTS AND PARTNERS

WORLDWIDE



BADMINTON WORLD
FEDERATION



JAPANESE HANDBALL ASSOCIATION



BEIJING SPORTS UNIVERSITY



RED STAR BELGRADE
BASKETBALL TEAM



PANATHINAIKOS BC
SUPERFOODS

PANATHINAIKOS
BASKETBALL CLUB



BELGIAN FOOTBALL
FEDERATION



BELGIAN OLYMPIC
COMMITTEE



TRIATHLON
NEW ZEALAND



WORLD SQUASH
FEDERATION

IN FRANCE



FRENCH BADMINTON
FEDERATION



FRENCH UNDERWATER SPORTS
FEDERATION



FRENCH UNIVERSITY SPORT
FEDERATION



FRENCH ARCHERY
FEDERATION



FRENCH VOLLEYBALL
FEDERATION

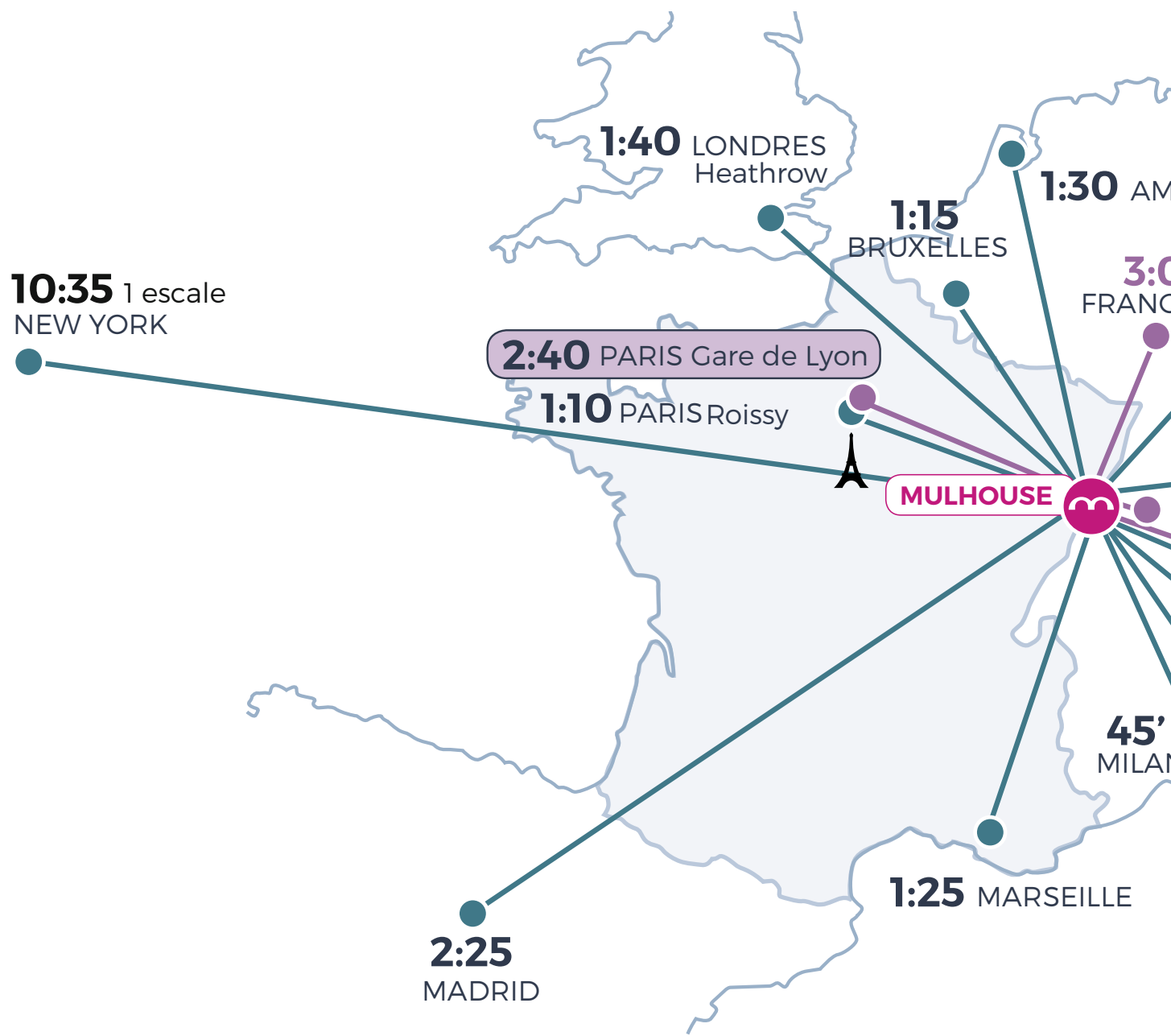


FRENCH NATIONAL
INSTITUTE OF SPORT,
EXCELLENCE AND PERFORMANCE



MULHOUSE ALSACE URBAN AREA

AT THE HEART OF EUROPE





Basel-Mulhouse -Fribourg

EuroAirport
30 km from Mulhouse

550 flights a week
100 worldwide destinations
More than 9 million passengers
per year



Mulhouse TGV Railway Station

Direct trains to Zurich,
Marseille, Paris, CDG airport

PARIS in 2 hours 40 min:
11 departures and arrivals a day
3 trains a day to and from Marseille
6 trains a day to and from Zurich



Major road connections

A35 and A36 motorways

2:55
ISTANBUL

8:30 1 escale
DUBAI

TRAVEL TIMES

- — Air transport
- — TGV





m2A has adopted an ambitious sports policy that strives to provide the local area with a wide range of high quality facilities for all needs that foster the best possible conditions for playing sport, especially at competitive level.

With an annual operational budget of almost 15 million euros and investment worth nearly 3 million euros, m2A provides top quality sports facilities.



CONTACT

JOP2024@mulhouse-alsace.fr

